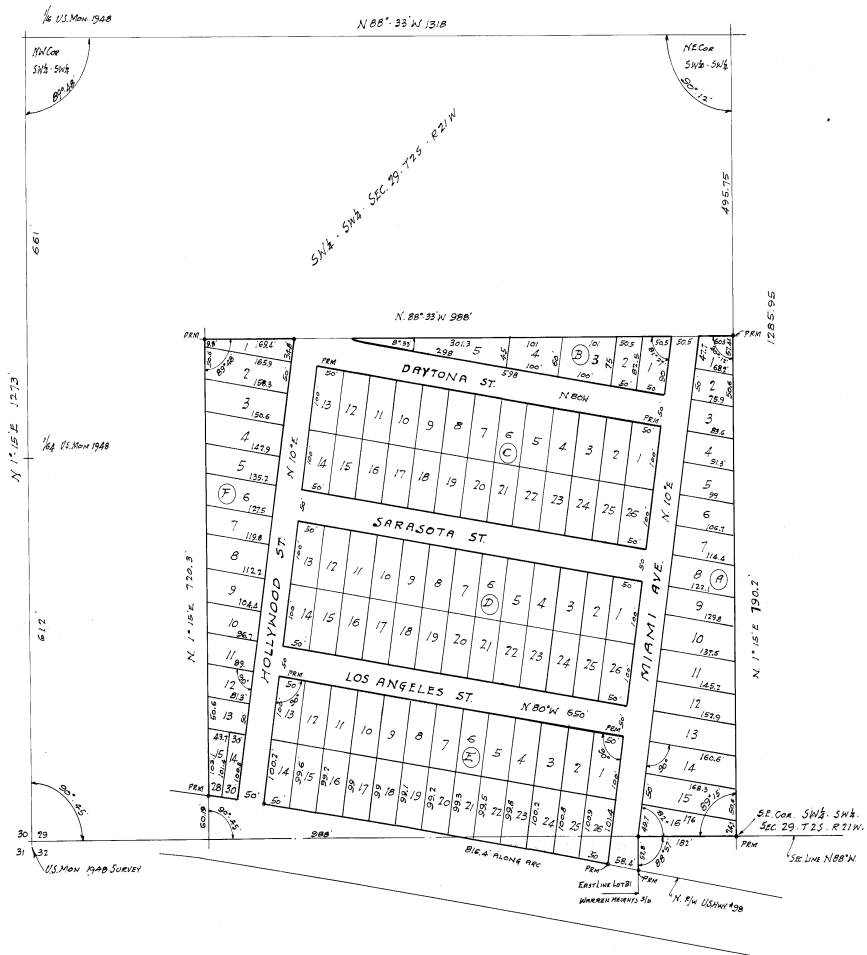


Book 2 Page 55

Book 2 Page 55



DESCRIPTION

FRANCISTA BEACH - FIRST ADDITION - A SUBDIVISION OF THE E 3/4 OF S 1/2 OF SW 1/4 AND E 3/4 OF S 1/4 OF N 1/2 OF SW 1/4 OF SW 1/4 SEC. 29 TWP. 2 S. R. 21 W AND A RESUBDIVISION OF LOTS # 31, 32, 33, 34 AND 35 OF WARREN HEIGHTS SUBDIVISION, LYING NORTH OF U.S. HWY # 98 IN SEC. 32 TWP. 2 S. R. 21 W TALLAHASSEE MERIDIAN, WALTON CO. FLORIDA

DEDICATION

STATE OF FLORIDA
WALTON COUNTY:

The undersigned, JOHN NITSOS and RUTH NITSOS, CERTIFY THAT THEY ARE THE OWNERS OF THE PROPERTY DESCRIBED IN THIS PLAT AND THAT THE SUBDIVISION THEREOF AS SHOWN HEREON IS A FREE AND VOLUNTARY ACT AND THAT ALL STREETS ARE DEDICATED TO PUBLIC USE

Witness:
John Nitsos
Ruth Nitsos

ACKNOWLEDGEMENT

STATE OF FLORIDA
WALTON COUNTY:

BEFORE ME THIS DAY APPEARED JOHN NITSOS AND RUTH NITSOS KNOWN TO ME TO BE THE INDIVIDUALS DESCRIBED IN AND WHO EXECUTED THE FOREGOING INSTRUMENT AND ACKNOWLEDGED THE EXECUTION THEREOF TO BE THEIR FREE AND VOLUNTARY ACT FOR THE PURPOSES THEREIN MENTIONED

WITNESSED MY HAND AND SEAL THIS 19th DAY of March 1983

Notary Public
Notary Public

COMMISSIONERS APPROVAL

THIS IS TO CERTIFY THAT THIS PLAT WAS PRESENTED TO THE BOARD OF COUNTY COMMISSIONERS OF WALTON COUNTY, FLORIDA AND APPROVED BY THEM FOR RECORD ON THE 20 DAY of March 1983

Clerk Board County Commissioners, Walton Co. Fla.

CERTIFICATE OF CLERK OF CIRCUIT COURT

I CERTIFY THAT I HAVE EXAMINED THE ABOVE PLAT AND HAVE FOUND IT TO CONFORM WITH ALL REQUIREMENTS OF CHAPTER 102'S LAWS OF THE STATE OF FLORIDA AND THE SAME HAS BEEN FILED FOR RECORD IN PLAT BOOK 2 PAGE 55 RECORDS OF WALTON COUNTY FLORIDA

Clerk of Circuit Court
Clerk of Circuit Court, WALTON CO. FLA.

GULF OF MEXICO

SURVEYOR'S CERTIFICATE

I CERTIFY THAT I HAVE SURVEYED THE LAND HEREIN DESCRIBED AS SHOWN ON THIS PLAT AND THE BOUNDARIES DO CONFORM TO THE DESCRIPTION IN THE TITLE AND PERMANENT REFERENCE MONUMENTS HAVE BEEN PLACED AS SHOWN AND ARE IN ACCORDANCE WITH SECTION 7 CHAPTER 102'S LAWS OF THE STATE OF FLORIDA

THIS SURVEY WAS MADE UNDER THE SUPERVISION OF
D. M. CARTER REGISTERED FLORIDA LAND SURVEYOR

D. M. Carter

FRANCISTA-BEACH

1ST ADDITION - SUBDIVISION

WALTON COUNTY FLORIDA